

# MELSEC iQ-F Series

## Programmable Controllers

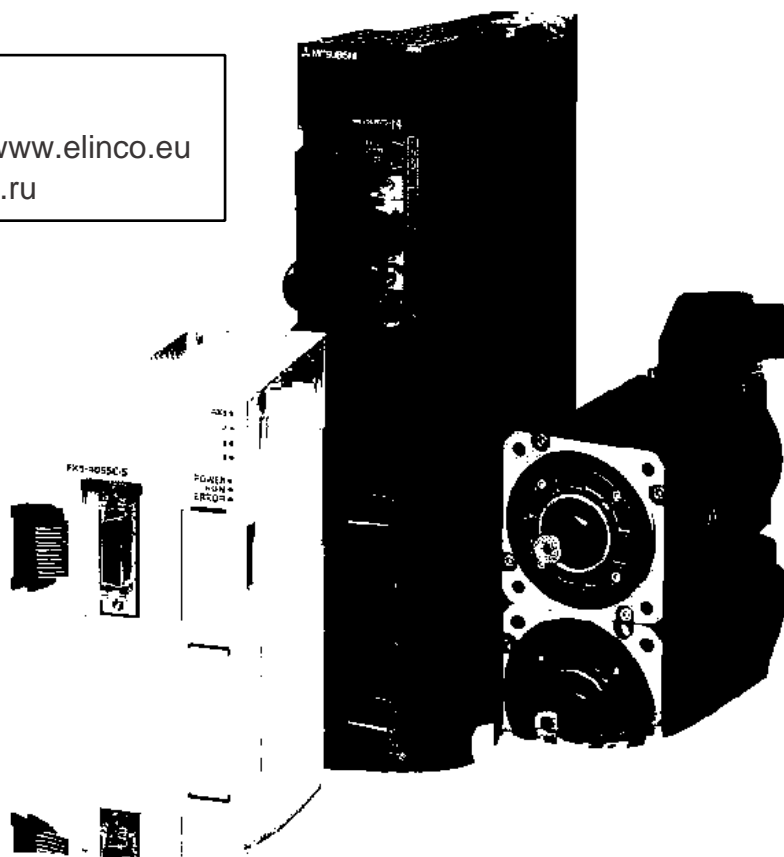
### Simple Motion Control for reliable positioning solutions

Industrial automation

**Elincom Group**

 European Union: [www.elinco.eu](http://www.elinco.eu)

 Russia: [www.elinc.ru](http://www.elinc.ru)



**EFFICIENT**



**IMPROVED  
PERFORMANCE**



**MORE  
CHOICE**



**SIMPLE  
INSTALLATION**

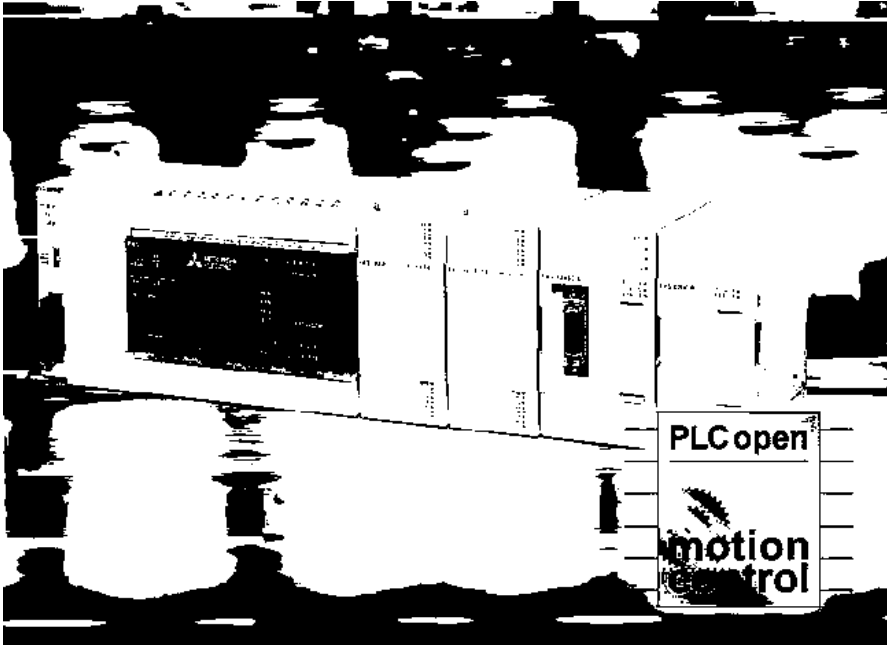


Advanced motion control for up to 4 axes via SSCNETIII/H

Various control functions available including advanced synchronous control, mark detection function or CAM auto generation

Simple and smart system installation

# Simple Motion – reliable, accurate and simple



The Simple Motion module is part of the MELSEC iQ-F series, which stands for an innovative concept with outstanding performance and superior drive control

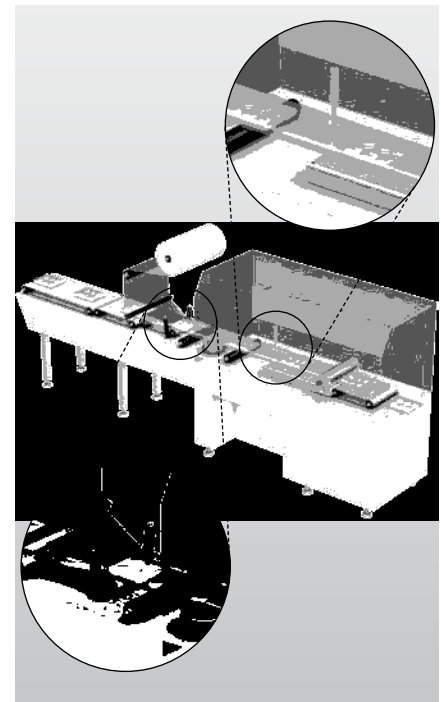
## Impressive functions on a small footprint

The standard encoder signal interface and high-speed inputs for mark detection, for example, enable the system to be used in classical serial machines such as packaging and bottling lines or palletising systems without fitting additional optional modules. A function for automatically calculating the CAM data for a rotary cutter application simply by entering the product length and the synchronization width is also included.

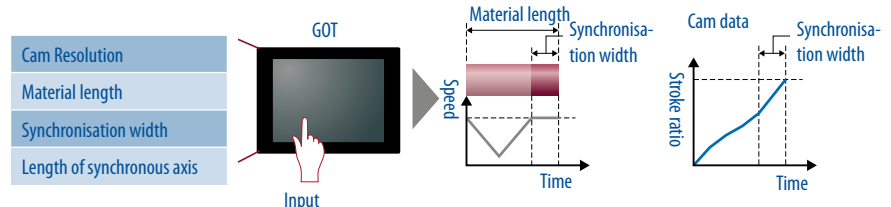
Various applications such as XY tables and sealing systems can easily realized using the positioning functions, which include linear interpolation (up to four axes), circular interpolation (up to two axes) and path control.

## Motion control for the MELSEC iQ-F Series

For the MELSEC iQ-F series Mitsubishi Electric offers the new FX5-40SSC-S 4-axis Simple Motion module. It complements the built-in positioning function of the MELSEC iQ-F base unit. Similar to positioning modules, this Simple Motion module is capable of a wide range of high-precision controls, such as positional control, advanced synchronous control, CAM control and speed and torque control with setup of even complex motion control functions being done easily by parameters and programming.



Synchronisation control with synchronous encoder



Automatic generation of cam data for rotary cutter

## Motion made easy

Automatic operation can be easily achieved by entering position addresses, speeds etc. via the sequence program. Powerful additional functions such as M-Code, jump functions, step mode and target address change functions are also available.

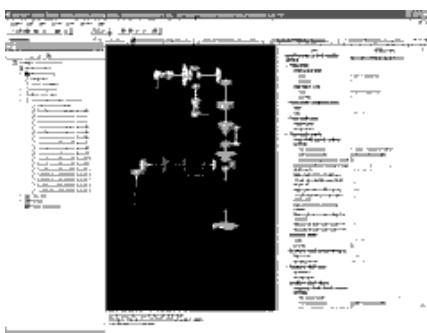
Speed and torque control can be used for tension control applications such as winding and unwinding. The control system can be switched between „position control“, „speed and torque control“ and „position control“. This makes it possible to continue to maintain a position with absolute position coordinates even after the control system has been switched over.

Synchronisation and cam functions can be combined in one system when synchronized control is required.

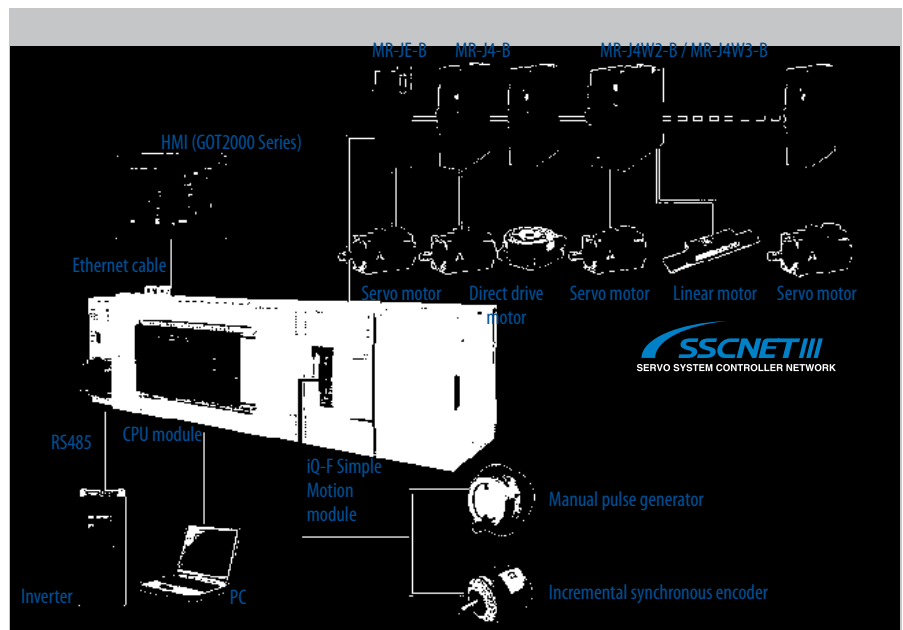
## Simple programming

The motion module is programmed with the GX Works3 software package using standardised PLCopen® function tools. All data can be easily generated by means of special auxiliary functions such as automatic speed calculation, off-line simulation and automatic calculation of auxiliary arcs. Programming and debugging can be easily carried out from your desk using a PC.

All you need is the FX5-40SSC-S module and a MELSEC iQ-F base unit. Neither the servo motors nor the servo amplifiers need to be connected for programming and testing. This considerably increases efficiency during setup and fault finding.



Easy synchronous control parameter Settings



Structure of a system configuration comprising servo amplifiers and servo motors together with an MELSEC iQ-F PLC-CPU.

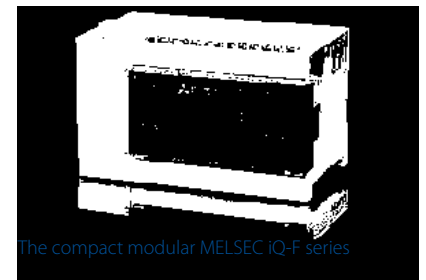
## High-speed SSCNETIII/H

The SSCNETIII/H is a high-speed motion network which has been developed by Mitsubishi Electric based on optical communication. It enables full-duplex communication with transmission speeds of up to 150 MB/s with SSCNETIII/H and a guaranteed bus cycle time of 0.44 ms.

The use of fibre optic cables makes communication fully resistant to electrical interference. SSCNETIII/H users therefore benefit in the form of greater reliability and more flexibility, as the fibre optic cables can be laid anywhere – even next to powerful electric motors.

Mitsubishi Electric servo amplifiers which are compatible with SSCNETIII can be combined in one system and support various servo motors for a wide range of applications.

## The MELSEC iQ-F



The compact modular MELSEC iQ-F series

The Mitsubishi MELSEC-F Series has been reborn as the MELSEC iQ-F Series, offering enhanced high speed bus, expanded built-in functions, advanced SSCNETIII/H support and improved engineering environment. Program and parameters are set with the GXWorks3 engineering software.

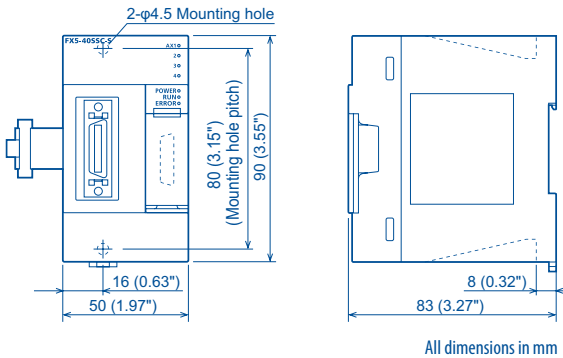
The basic units are equipped with innovative processors and are designed for international use, operating on 100/240 VAC or 24 VDC. Base models are available with 32, 64 and 80 I/O with either relay or transistor outputs. The base are expandable up to 256 I/O with expansion modules or to up to 512 I/O via suitable networks (CC-Link, CC-Link IE Field, Ethernet and Profibus).

The MELSEC iQ-F series is the result of the consistent development of the MELSEC FX3 series and offers outstanding performance. Mitsubishi Electric pioneered the compact PLC over thirty years ago and now claims market leadership in the compact PLC sector with over thirteen million controllers sold.

# Specifications

Specifications		FX5-40SSC-S
Number of controllable axes		up to 4
Interpolation functions		Linear interpolation for up to 4 axes, circular interpolation for 2 axes
Output type		SSCNETIII/H
Output signal		Bus
Servo amplifier		MR-JE-B / MR-J4-B / MR-J4W2-B / MR-J4W3-B servo amplifier range (over SSCNETIII/H)
Operation cycle		1.77 ms
Positioning	Method	PTP (Point To Point) control, path control (linear and arc), speed control, speed-position switching control, position-speed switching control, speed-torque control
	Acceleration/deceleration control	Trapezoidal acceleration/deceleration, S-curve acceleration/deceleration
	Compensation	Backlash compensation, Electronic gear, Near pass function
	OPR control	5 different methods + Fast OPR
Number of positioning data		600 per axis (can be set with GX Works3 or PLC program)
External input signals	Encoder	1 Encoder A/B phases, PULSE, SIGN
	Input	DI, EMI
Cam function	Output axis	up to 4 cam axis
	Number of cams	up to 64 (depending on memory capacity, cam resolution and number of coordinates)
	Cam data type	Stroke ratio data type, Coordinate data type
	Cam auto generation	for rotary cutter

# Dimensions



## European Offices

Mitsubishi Electric Europe B.V. Gothaer Straße 8 D-40880 Ratingen Phone: +49 (0)2102 / 486-0	Germany	Mitsubishi Electric (Russia) LLC 52, bld. 1 Kosmodamianskaya emb. RU-115054 Moscow Phone: +7 495 / 721 2070	Russia
Mitsubishi Electric Europe B.V. Radlická 751/113e Avenir Business Park CZ-158 00 Praha 5 Phone: +420 251 551 470	Czech Rep.	Mitsubishi Electric Europe B.V. Carretera de Rubí 76-80 Apdo. 420 E-08190 Sant Cugat del Valles (Barcelona) Phone: +34 (0) 93 / 5653131	Spain
Mitsubishi Electric Europe B.V. 25, Boulevard des Bouvets F-92741 Nanterre Cedex Phone: +33 (0) / 55 68 55 68	France	Mitsubishi Electric Europe B.V. (Scandinavia) Fjellievägen 8 SE-22736 Lund Phone: +46 (0) 8 625 10 00	Sweden
Mitsubishi Electric Europe B.V. Viale Colleoni 7 Palazzo Sirio I-20864 Agrate Brianza (MB) Phone: +39 039 / 60 53 1	Italy	Mitsubishi Electric Turkey Elektrik Ürünleri A.Ş. Şerifali Mahallesi Nutuk Sokak No:5 TR-34775 Ümraniye-İSTANBUL Phone: +90 (0)216 / 526 39 90	Turkey
Mitsubishi Electric Europe B.V. Westgate Business Park, Ballymount IRL-Dublin 24 Phone: +353 (0)1 4198800	Ireland	Mitsubishi Electric Europe B.V. Travellers Lane UK-Hatfield, Herts. AL10 8XB Phone: +44 (0)1707 / 28 87 80	UK
Mitsubishi Electric Europe B.V. Nijverheidsweg 23a NL-3641RP Mijdrecht Phone: +31 (0) 297250350	Netherlands	Mitsubishi Electric Europe B.V. Dubai Silicon Oasis United Arab Emirates - Dubai Phone: +971 4 3724716	UAE
Mitsubishi Electric Europe B.V. ul. Krakowska 50 PL-32-083 Balice Phone: +48 (0) 12 347 65 00	Poland		

## Representatives

GEVA Wiener Straße 89 A-2500 Baden Phone: +43 (0)2252 / 85 55 20	Austria	Beijer Electronics A/S Lykkegardsvej 17 DK-4000 Roskilde Phone: +45 (0)46 / 75 76 66	Denmark	Beijer Electronics SIA Ritausmas iela 23 LV-1058 Riga Phone: +371 (0)6 / 784 2280	Latvia	Sirius Trading & Services Aleea Lacul Morii Nr. 3 RO-060841 Bucuresti, Sector 6 Phone: +40 (0)21 / 430 40 06	Romania	ILAN & GAVISH Ltd. 24 Shenkar St., Kiryat Arie IL-49001 Petah-Tikva Phone: +972 (0)3 / 922 18 24	Israel
000 TECHNIKON Prospect Nezavisimosti 177-9 BY-220125 Minsk Phone: +375 (0)17 / 393 1177	Belarus	HANS FOLSGAARD A/S Theilgaard Torv 1 DK-4600 Køge Phone: +45 4320 8600	Denmark	Beijer Electronics UAB Goštautu q. 3 LT-48324 Kaunas Phone: +370 37 262707	Lithuania	INEA SR d.o.o. Ul. Karadjordjeva 12/217 SER-11300 Smederevo Phone: +386 (0)26 / 461 54 01	Serbia	GIRIT CELADON Ltd. 12 Haomanut Street IL-42505 Netanya Phone: +972 (0)9 / 863 39 80	Israel
ESCO DRIVES Culliganlaan 3 BE-1831 Diegem Phone: +32 (0)2 / 717 64 60	Belgium	Beijer Electronics Eesti OÜ Pärnu mnt.160i EE-11317 Tallinn Phone: +372 (0)6 / 51 81 40	Estonia	ALFATRADER Ltd. 99, Paola Hill Malta-Paola PLA 1702 Phone: +356 (0)21 / 697 816	Malta	SIMAP SK Jána Derku 1671 SK-911 01 Trenčín Phone: +421 (0)32 748 04 72	Slovakia	CEG LIBAN Cebaco Center/Block A Autostrade DORA Lebanon-Beirut Phone: +961 (0)1 / 240 445	Lebanon
KONING & HARTMAN B.V. Woluwelaan 31 BE-1800 Vilvoorde Phone: +32 (0)2 / 257 02 40	Belgium	Beijer Electronics OY Vanha Nurmijärventie 62 FIN-01670 Vantaa Phone: +358 (0)207 / 463 500	Finland	INTEHISIS SRL bld. Traian 23/1 MD-2060 Kishinev Phone: +373 (0)22 / 66 4242	Moldova	INEA RBT d.o.o. Stegne 11 SI-1000 Ljubljana Phone: +386 (0)1 / 513 8116	Slovenia	ADROIT TECHNOLOGIES 20 Waterford Office Park 189 Witkoppen Road ZA-Fourways Phone: +27 (0)11 / 658 8100	South Africa
INEA RBT d.o.o. Stegne 11 SI-1000 Ljubljana Phone: +386 (0)1 / 513 8116	Bosnia and Herzegovina	PROVENDOR OY Fertti utca 14 FIN-28130 Pori Phone: +358 (0)1 / 431-9726	Finland	HIFLEX AUTOM. B.V. Wolweverstraat 22 NL-2984 DC Ridderkerk Phone: +31 (0)180 / 46 60 04	Netherlands	Beijer Electronics Automation AB Box 426 SE-20124 Malmö Phone: +46 (0)40 / 35 86 00	Sweden		
AKHNATON 4, Andrei Ilyachev Blvd., PO Box 21 BG-1756 Sofia Phone: +359 (0)2 / 817 6000	Bulgaria	UTEKO A.B.E.E. 5, Mavrogenous Str. GR-18542 Piraeus Phone: +359 (0)211 / 1206-900	Greece	KONING & HARTMAN B.V. NL-2627 AP Delft Phone: +31 (0)15 260 99 06	Netherlands	OMNI RAY AG Im Schörlis 5 CH-8600 Dübendorf Phone: +41 (0)44 / 802 28 80	Switzerland		
INEA CR Losinjka 4 a HR-10000 Zagreb Phone: +385 (0)1 / 36 940 -01/-02/-03	Croatia	MELTRADER Kft. Fertti utca 14 HU-1107 Budapest Phone: +36 (0)1 / 431-9726	Hungary	Beijer Electronics AS Postboks 487 NO-3002 Drammen Phone: +47 (0)32 / 24 30 00	Norway	OOO "CSC-AUTOMATION" 4-B, M. Raskovoy St. UA-02660 Kiev Phone: +380 (0)44 / 494 33 44	Ukraine		
AutoCont C.S. S.R.O. Kafkova 1853/3 CZ-702 00 Ostrava 2 Phone: +420 595 691 150	Czech Republic	TOO Kazpromavtomatika Ul. Zhambyla 28 KAZ-100017 Karaganda Phone: +7 7212 / 50 10 00	Kazakhstan	Fonseca S.A. R. João Francisco do Casal 87/89 PT-3801-997 Aveiro, Esqueira Phone: +351 (0)234 / 303 900	Portugal				



Mitsubishi Electric Europe B.V. / FA - European Business Group / Gothaer Straße 8 / D-40880 Ratingen / Germany / Tel.: +49(0)2102-4860 / Fax: +49(0)2102-4861120 / info@mitsubishi-automation.com / https://eu3a.mitsubishielectric.com

Art. no. 284039-A / 02.2015 / Specifications subject to change / All trademarks and copyrights acknowledged.

