

Versatile Machine-Level HMI for Stand-Alone Applications

Features and Benefits

FactoryTalk View Machine Edition offers OEMs and end-users features that reduce development and commissioning time, while improving the operator's experience and retaining the plant-wide scalability. Reduce design and commissioning time with:

- A simplified installation process
- Reusable global objects
- Search and Replace capability for tags and text on multiple displays and global objects
- Hotlink to a specific tag location using the Cross Reference capability

Expand machine flexibility and capability through:

- Access to run-time terminal information
- Access to documentation via the PDF Viewer
- ActiveX controls that simplify complex runtime tasks
- Increased flexibility of reusable components to allow programmatic control
- Data logging for trend analysis
- Recipe management

Runtime language switching

The built-in Microsoft Arial Unicode font includes virtually all Unicode character ranges, meaning that multiple-language implementations can be accomplished more easily, without cumbersome font-linking.



FactoryTalk View Machine Edition (ME) software is a versatile HMI application that provides a dedicated and powerful solution for machine-level operator interface devices. As an integral element of the Rockwell Automation visualization solution, FactoryTalk View Machine Edition provides superior graphics, run-time language switching and faster commissioning time through a common development environment.

FactoryTalk View Machine Edition 7.0 adds new features that reduce design and commissioning time, as well as broaden the scope of potential applications. These new features include:

- Increased device support, including the new PanelView Plus 6 400/600 and PanelView Plus 6 400/600 Compact terminals, as well as support for Direct Connectivity to devices on EthernetIP, DeviceNet, and ControlNet.
- Improved design-time productivity, including a simplified installation, as well as Search and Replace, and Cross Reference capabilities that help streamline programming tasks.
- Improved run-time efficiencies, including expanded data-logging capabilities, greater flexibility for reusable components, simplified run-time tasks, and a new ActiveX control that improves access to terminal information.

Industrial automation

Elincom Group

European Union: www.elinco.eu

Russia: www.elinc.ru

Support More Devices

Directly Access Non-Controller Devices

FactoryTalk View Machine Edition now offers two methods to read/write devices without bridging through the controller: EDS parameter tag browsing and CIP data table tag browsing.

EDS files are open text files required for all CIP devices. EDS parameter tag browsing references the [Params] section of the EDS file, and is similar to offline browsing in the controller. It uses the link path, data type, and data size entries of the EDS file to read and write data.

Devices that support CIP data table browsing are smart devices that contain pre-defined, ControlLogix-style tags that support direct access. CIP data table tag browsing references these device symbols built into the firmware, and is similar to online browsing in the controller. It uses symbolic addressing enabled by the data table object.

In both methods, diagnostics and error handling are similar to controller communications.

Additional Device Support

This version of FactoryTalk View Machine Edition is required to create applications for the new PanelView Plus 6 400/600 and PanelView Plus 6 Compact 400/600 devices.



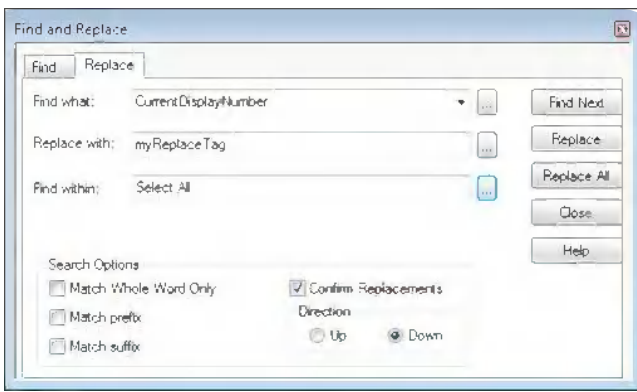
Reduce Design and Commissioning Time

Simplified Install

FactoryTalk View Machine Edition version 7.0 includes a simplified installation process that is reliable and easy to understand. Using an integrated installation process, all FactoryTalk View products are included on a single DVD and arranged for optimal installation order.

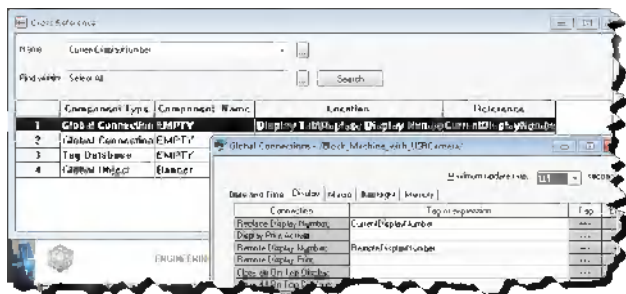
Search and Replace

The Search and Replace capability allows you to execute your changes more efficiently, making it easier for you to update and maintain your applications. Operating on both displays and global objects, you can search and replace both tags and text in multiple project objects.



Cross Reference

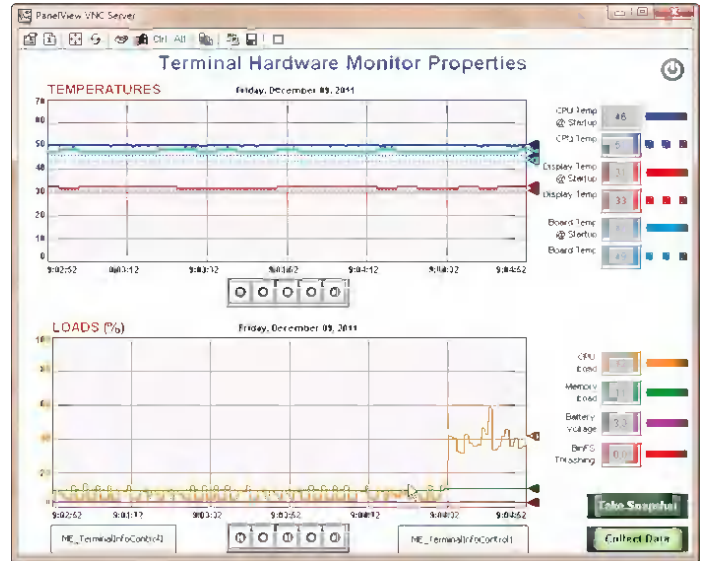
The Cross Reference feature also allows you to easily maintain and update your application, as well as providing faster troubleshooting capability. With this feature, the system generates a cross-reference table, and each cross-reference item is a hot link to the specific object that contains the tag reference.



Expand Machine Flexibility and Capability

Retrieve Runtime Terminal Data

Using the new TerminalInfo ActiveX control, you can now capture information for internal and external NIC, such as TCP/IP device name and address, subnet mask, and MAC ID. You can also capture terminal environment runtime data such as temperature for both CPU and display, load for CPU and memory, and battery voltage.

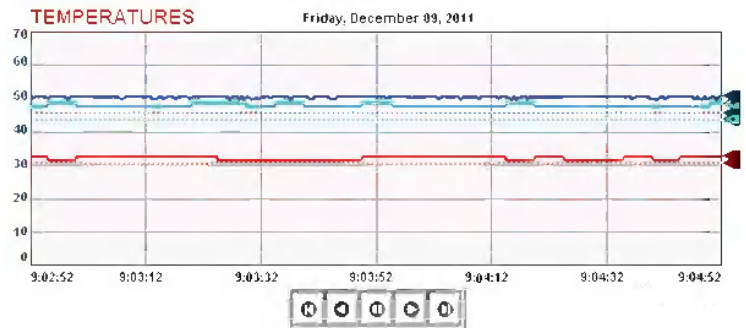


Increase Flexibility of Reusable Components

Based on modifications to the Goto Display and Macro buttons, you can now programmatically control the Display destination or Macro.

Increase Data Logging Capability

With the increased in data model size to 1,000,000 records, you can now log application data for longer periods.



Runtime Application Conversion Equals Easier Migration

An automated “wizard” lets you import PanelView Standard and PanelView Enhanced projects into FactoryTalk View Machine Edition applications via FactoryTalk View Studio. The process successfully retains most of a PanelView project, including graphic displays and most objects, text, tags, alarm messages, and local and global messages.

Multiple Version Support

FactoryTalk View Studio allows you to create runtime applications (.mer files) for use with previous FactoryTalk View Machine Edition runtime versions, giving you the option of maintaining an installed base of older runtime versions and PanelView Plus and PanelView Plus CE terminals while using the latest FactoryTalk View Studio editor. This eliminates the time required to upgrade and requalify the runtime software or upgrade terminals to the latest firmware.

Runtime Language Switching

FactoryTalk View Enterprise, both FactoryTalk View Site Edition and FactoryTalk View Machine Edition, supports Runtime Language Switching of 20 runtime and 40 design-time languages. You have the ability to configure multiple language versions of an application with the capability of switching application languages dynamically at runtime. Text within alarm, local and information messages, as well as text embedded in graphics objects, can be translated easily using the string import/export to Microsoft® Excel feature. This feature optimizes duplicate strings and allows a single translation for strings that appear multiple times in the application. The built-in Microsoft Arial Unicode font includes virtually all Unicode character ranges so multiple-language implementations can be accomplished more easily, without cumbersome font-linking.

Get Answers Fast

When you purchase any product in the FactoryTalk View Machine Edition family, you receive both industry-leading software and award-winning global support. Use the MySupport feature to personalize the Rockwell Automation Support Services website for your needs. MySupport can send you regular e-mail messages with links to the latest technical notes and software updates for FactoryTalk View Machine Edition and other products. To register, please visit:

<http://support.rockwellautomation.com>

Get More Information

For ordering information, contact your local Rockwell Automation sales office or Allen-Bradley distributor. Or learn more by visiting:

<http://www.rockwellsoftware.com>

Allen-Bradley, ControlLogix, FactoryTalk, Integrated Architecture, PanelView, PowerFlex, RSLinx, RSLogix and Rockwell Software are trademarks of Rockwell Automation, Inc. All other trademarks and registered trademarks are the property of their respective owners.

www.rockwellautomation.com

Power, Control and Information Solutions Headquarters

Americas: Rockwell Automation, 1201 South Second Street, Milwaukee, WI 53204-2496 USA, Tel: (1) 414.382.2000, Fax: (1) 414.382.4444

Europe/Middle East/Africa: Rockwell Automation NV, Pegasus Park, De Kleetlaan 12a, 1831 Diegem, Belgium, Tel: (32) 2 663 0600, Fax: (32) 2 663 0640

Asia Pacific: Rockwell Automation, Level 14, Core F, Cyberport 3, 100 Cyberport Road, Hong Kong, Tel: (852) 2887 4788, Fax: (852) 2508 1846