

Migration Solutions



PanelView™ Component Graphic Terminals to PanelView 800 Graphic Terminals

Why Upgrade or Migrate

While PanelView Component has been a valuable part of our portfolio for the past eight years, this product will no longer be available for sale after January 2016 (for PanelView Component C1000) and June 2016 (for PanelView Component C400 and C600). Now is time to migrate to the newly launched series, PanelView 800 graphic terminals.

As the latest component graphical terminal offering, PanelView 800 offers better performance and features to help improve your human machine interface design.

PanelView 800 Features and Benefits

- Faster CPU processor speed
- Faster boot-up and screen-switching time
- Higher built-in memory (128MB/256MB)
- Higher resolution display with LED backlight and 65K color display
- Certification that is aligned with global standards, support hazardous locations and wider range of industrial applications (Class 1 Division 2 certified and IP65 NEMA 4X rated)
- Flexibility in landscape and portrait modes



PanelView Component Graphic Terminals
(C400, C600 and C1000)



PanelView 800 Graphic Terminals



Identify, Mitigate and Eliminate the Risks of Automation Obsolescence

In today's economy, it is necessary to have migration solutions that help you to achieve increased productivity and lessen your risk of maintaining your legacy equipment. You need to work with a supplier that has the product, service, and industry knowledge to partner with you on an upgrade strategy that will help you maximize your competitive advantage.

Rockwell Automation and its partners will work with you to outline a plan that fits your application needs and long-term goals. We can help you migrate all at once or in phases, at the pace that is comfortable for you and fits your budget.

With your goals in mind, Rockwell Automation has developed a migration strategy that will allow you to quickly and easily migrate from PanelView Component graphic terminals to PanelView 800 graphic terminals. This approach will lower conversion time and engineering costs.

*ACTIVE: Most current offering within a product category.

ACTIVE MATURE: Product is fully supported, but a newer product or family exists. Gain value by migrating.

END OF LIFE: Discontinued date announced – actively execute migrations and last time buys. Product generally orderable until the discontinued date.¹

DISCONTINUED: New product no longer manufactured or procured.² Repair/exchange services may be available.

¹ - Outages on specific items may occur prior to the Discontinued date. ² - Limited stock may be available in run-out mode, regionally.

Industrial automation

Elincom Group

European Union: www.elinco.eu

Russia: www.elinc.ru

Allen-Bradley • Rockwell Software

**Rockwell
Automation**

Supporting Your Migration

With industry knowledge and worldwide service and support, Rockwell Automation will collaborate with you to help ensure a smooth transition from your PanelView Component to the PanelView 800. Here's how:

The following table shows the recommended migration for each End of Life model of PanelView Component:

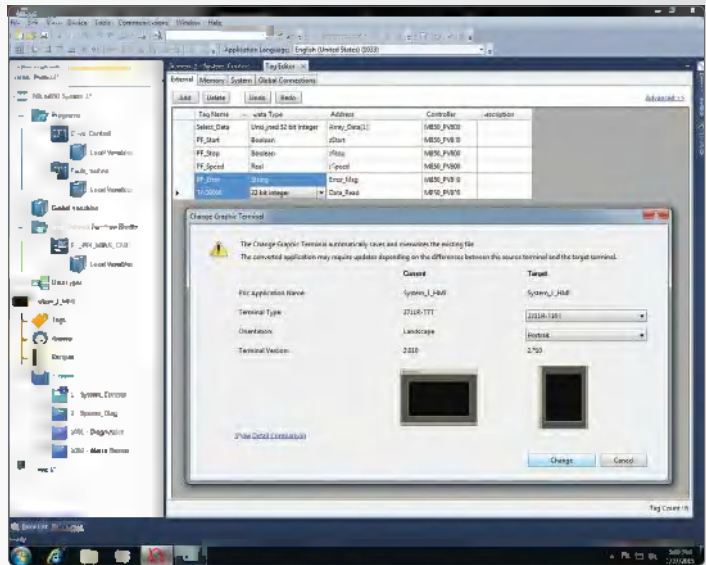
Existing PanelView Component	Recommended Migration to PanelView 800	Accessories Needed
PanelView Component C400 (4-inch) Dimension*: 116 x 138 x 43 Cutout Dimension: 99 x 119	PanelView 800 4-inch Dimension: 116 x 138 x 43 Cutout Dimension: 99 x 119	Not required
PanelView Component C600 (6-inch) Dimension: 154 x 209 x 57 Cutout Dimension: 135 x 189	PanelView 800 7-inch Dimension: 144 x 197 x 54 Cutout Dimension: 125 x 179	Adapter plate kit 2711R-APK7
PanelView Component C1000 (10-inch) Dimension: 250 x 308 x 55 Cutout Dimension: 231 x 289	PanelView 800 10-inch Dimension: 225 x 287 x 55 Cutout Dimension: 206 x 269	Adapter plate kit 2711R-APK10

*Dimension (Height x Width x Depth) mm
 Cutout Dimension (Height x Width) mm

Connected Components Workbench™ Software Release 8

Offers Change Graphic Terminal feature in DesignStation to facilitate the application migration from PanelView Component to PanelView 800.

Download [Connected Components Workbench Software Release 8](#).



PanelView Component Graphic Terminals Compared to PanelView 800 Graphic Terminals

Features	PanelView Component Graphic Terminals	PanelView 800 Graphic Terminals
Resolution (4" / 7" / 10")	480 x 272 / 320 x 240 / 640 x 480	480 x 272 / 800 x 480 / 800 x 600
Colors	256 colors (only 4" is 65K colors)	65K
Backlight	CCFL and LED	LED
Power Supply	24V DC	24V DC
Processor, CPU Speed	200 MHz	800 MHz
Internal Storage	64 MB	128 MB / 256 MB
RAM	64 MB	128 MB / 256 MB
Operation System	Microsoft Windows CE 5.0	Microsoft Windows CE 6.0
RS-232/RS-422/RS-485 (isolated)	RS-232 and RS-422/RS-485	RS-232 and RS-422/RS-485
Ethernet 10/100 Mbps	1	1
USB Host (USB 2.0)	Yes	Yes
SD™ Support	Yes, SD	Yes, microSD™
Certifications	cULus listed, CE, RoHs (only 4" is Class 1 Div 2)	cULus listed, Class 1 Div 2, Groups A,B,C,D, T4A, CE, RCM, KC, RoHS
Recipe	1 recipe file	50 recipe files
Graphics	Simple industrial symbols	Support industrial symbols
Portrait Mode	Landscape only	Landscape and portrait
Dimension and Aesthetics	Bigger dimension (integrated clamps)	Slimmer dimension

Allen-Bradley, Connected Components Workbench, Listen. Think. Solve., and PanelView are trademarks of Rockwell Automation, Inc. Trademarks not belonging to Rockwell Automation are property of their respective companies.

www.rockwellautomation.com

Power, Control and Information Solutions Headquarters

Americas: Rockwell Automation, 1201 South Second Street, Milwaukee, WI 53204-2496 USA, Tel: (1) 414.382.2000, Fax: (1) 414.382.4444

Europe/Middle East/Africa: Rockwell Automation NV, Pegasus Park, De Kleetlaan 12a, 1831 Diegem, Belgium, Tel: (32) 2 663 0600, Fax: (32) 2 663 0640

Asia Pacific: Rockwell Automation, Level 14, Core F, Cyberport 3, 100 Cyberport Road, Hong Kong, Tel: (852) 2887 4788, Fax: (852) 2508 1846